

A

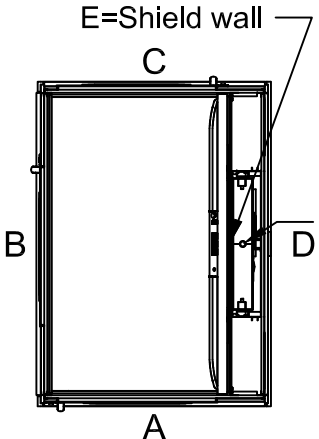
B

C

D

E

Positioning of machinery:



E=Shield wall
At the start of the lift installation a lifting eye bolt for a rated load of 500 kg has to be provided at the position of the symbol marked on the drawing

Options
4 kW Frekv 3x400V 50-60 Hz Soft
Capacity: 1 000,00 kg

*To be adapted on site
**Customized panel

Approved by builder:

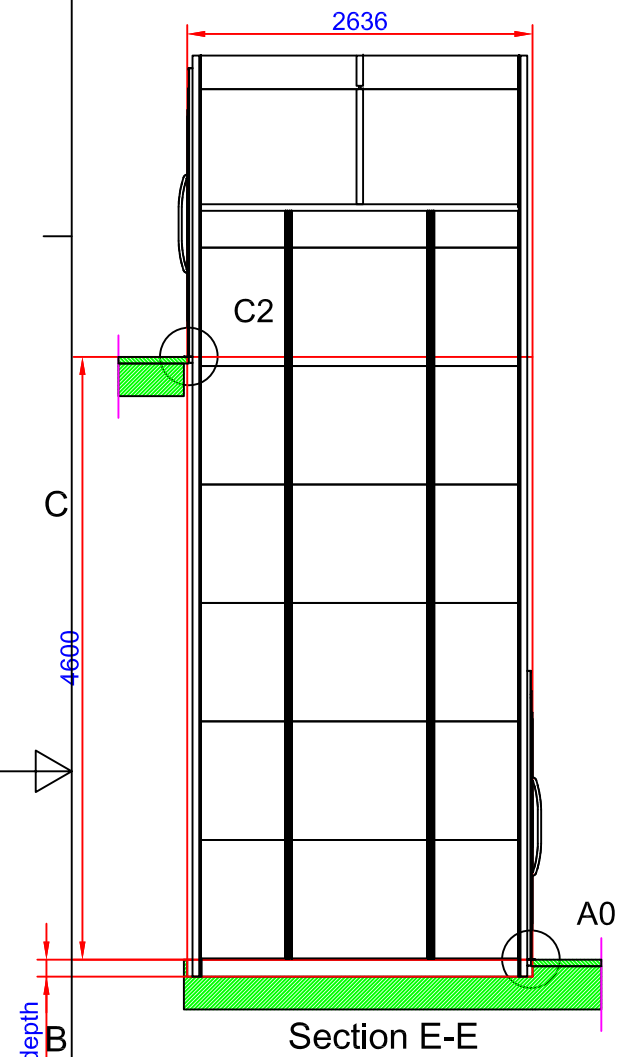
European view placement:



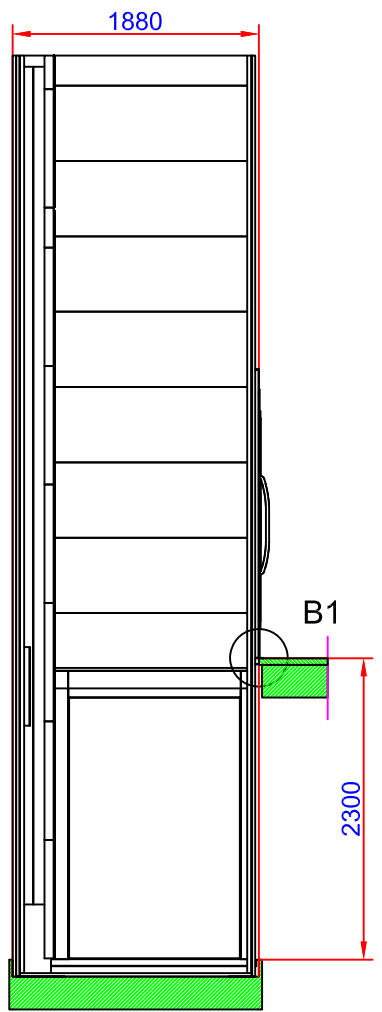
Tender no	Principal drawing A8000 - 1405*2480 Shaft drawing		
Order no			
Gen. Tolerances SS-ISO 27681-1 m	Date 2018-11-01	sheet 1 of 7	Scale: A3, 1:1

Shaft cutout sizes

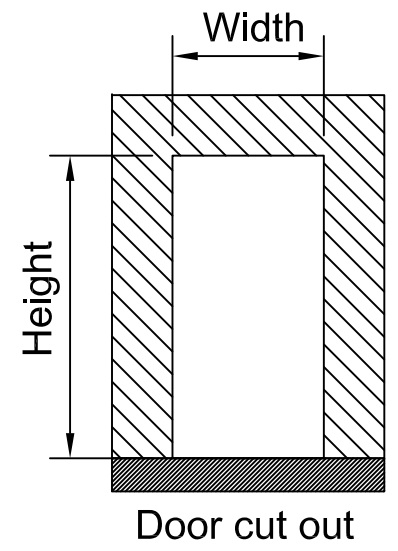
Door front cutout sizes		
Landing	Width	Height
A 0	1855	2250
B 1	2580	2250
C 2	1855	2250



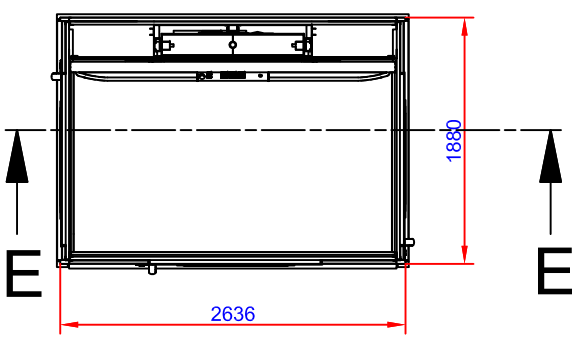
Section E-E



Section G-G

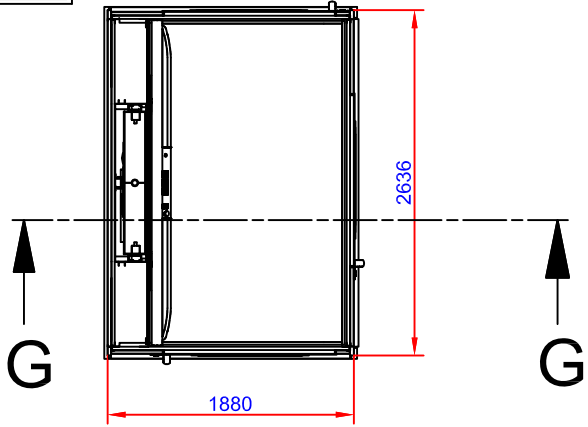


130 mm pit depth. Bottom surface must be flat + 10 mm



2636

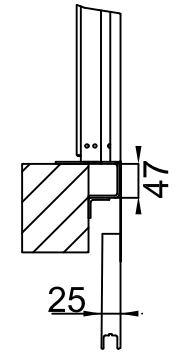
1880



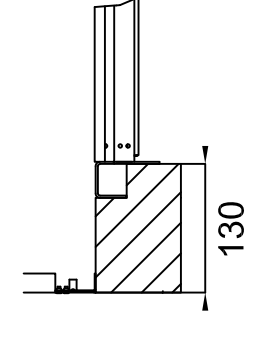
1880

2636

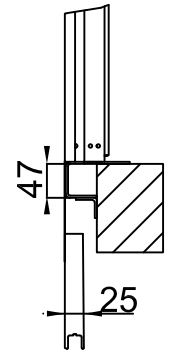
C2 (1:10)



A0 (1:10)



B1 (1:10)



Approved by builder:

European view placement:

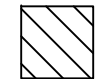


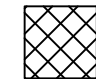
Tender no	Principal drawing		
Order no	A8000 - 1405*2480		
Gen. Tolerances	Date	sheet	Scale:
SS-ISO 27681-1 m	2018-11-01	2 of 7	A3, 1:1

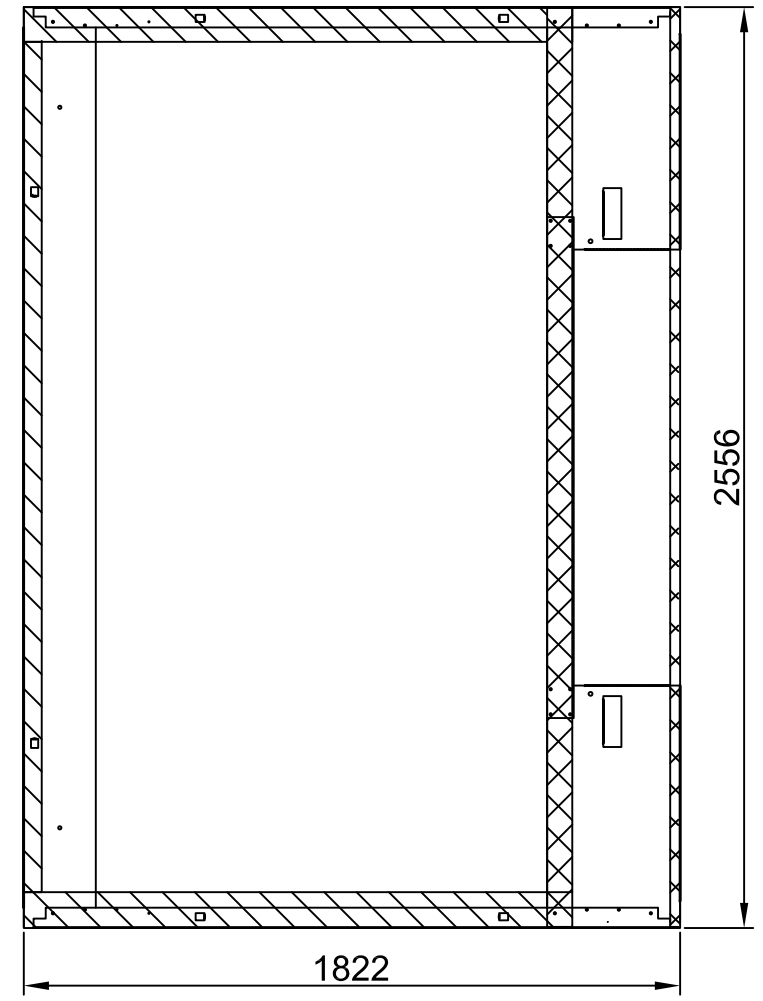
Loads sustained by shaft and platform
and fixing points bottom frame

Recommended positioning of fixing points.
Loads per fixing point, $F = 4 \text{ kN}$

A (1:5)

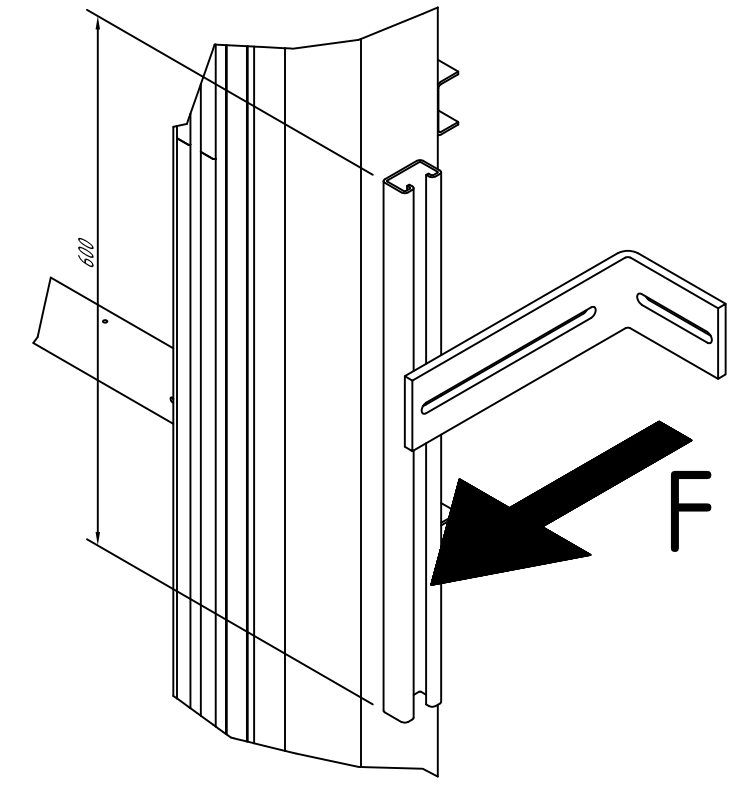
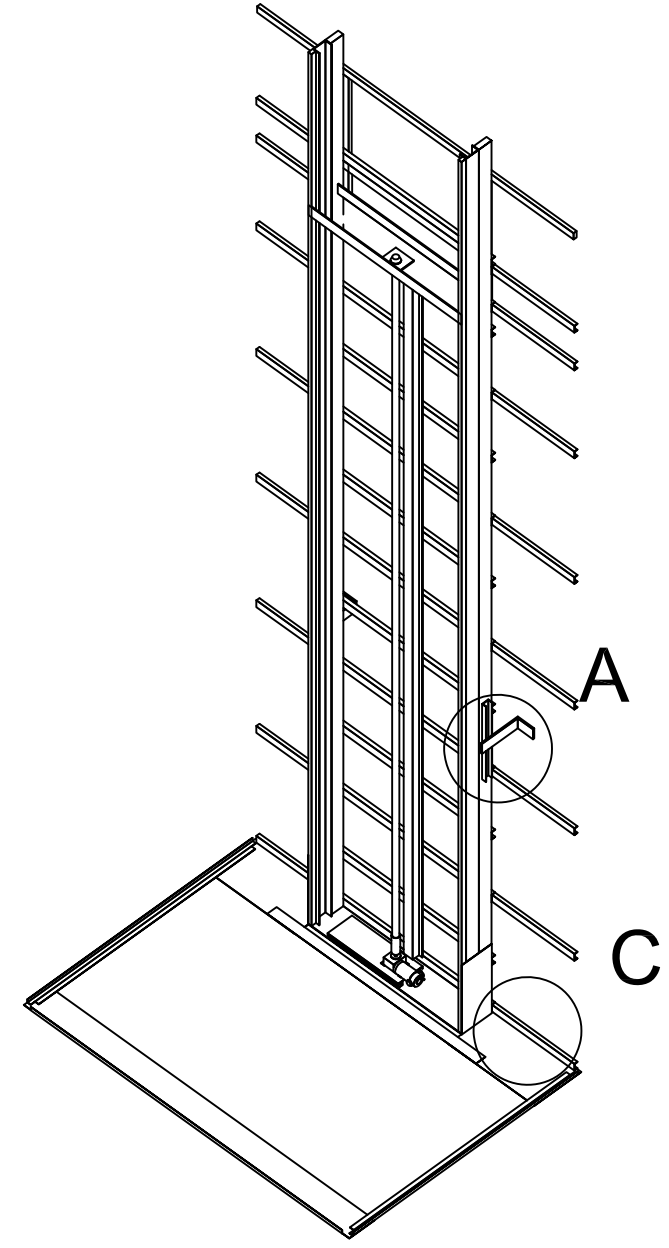
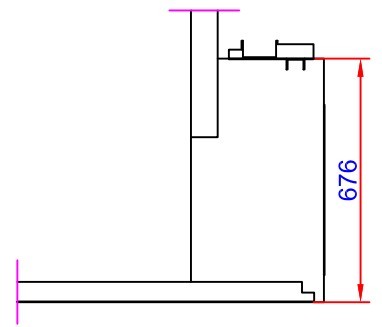
 L section force: 3,48 kN
L section load: 11,41 kN/m²

 Mast force: 15,85 kN
Mast load: 127,82 kN/m²




Scale: 1:20

C (1:20)

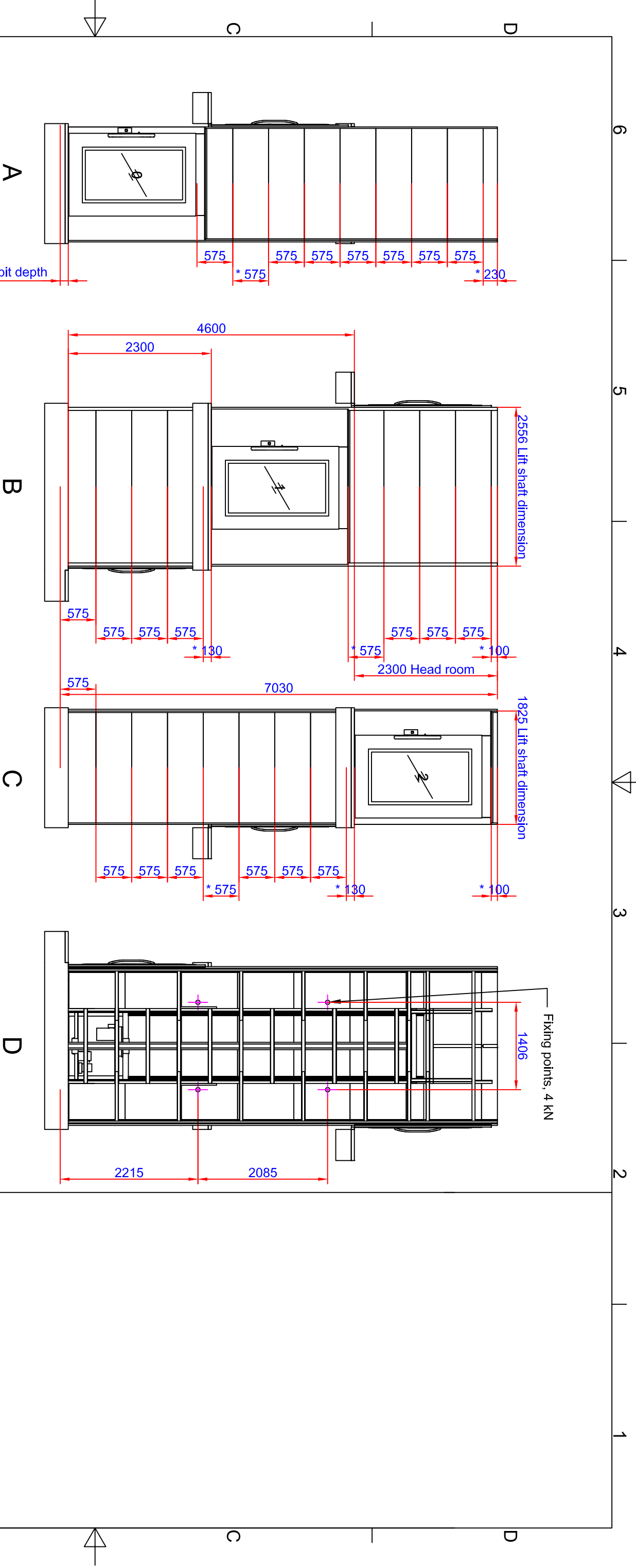


Approved by
builder:

European view placement: 



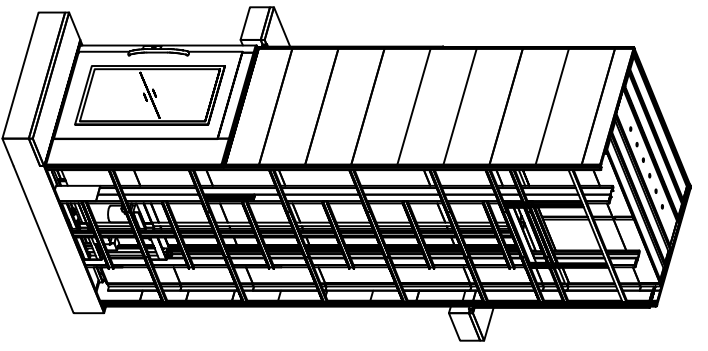
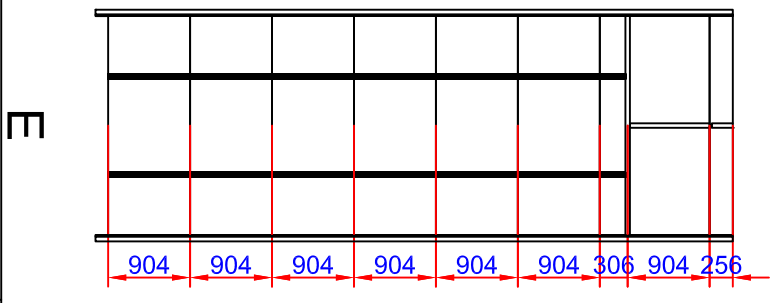
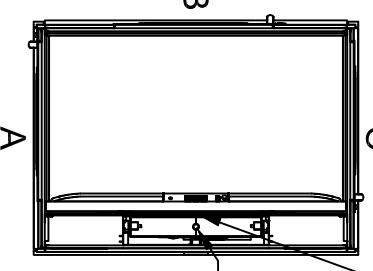
Tender no	Principal drawing		
Order no	A8000 - 1405*2480		
	Loads and forces		
Gen. Tolerances	Date	sheet	Scale:
SS-ISO 27681-1 m	2018-11-01	3 of 7	A3, 1:1



Positioning of machinery:

E=Shield wall

At the start of the lift installation a lifting eye bolt for a rated load of 500 kg has to be provided at the position of the symbol marked on the drawing



Options
 4 kW Frekv 3x400V 50-60 Hz Soft
 Capacity: 1 000,00 kg

*To be adapted on site
 **Customized panel

Approved by
 builder:

European view placement:



Tender no
 Order no

Principal drawing
 A8000 - 1405*2480
 Shaft drawing

Gen. Tolerances
 SS-ISO 27681-1 m

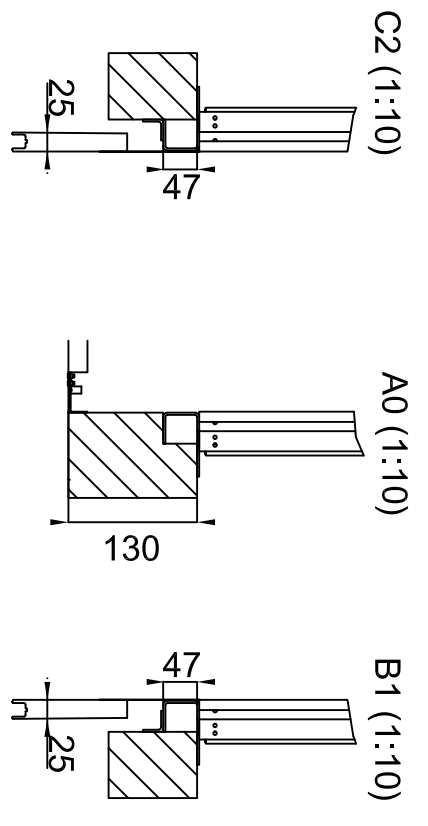
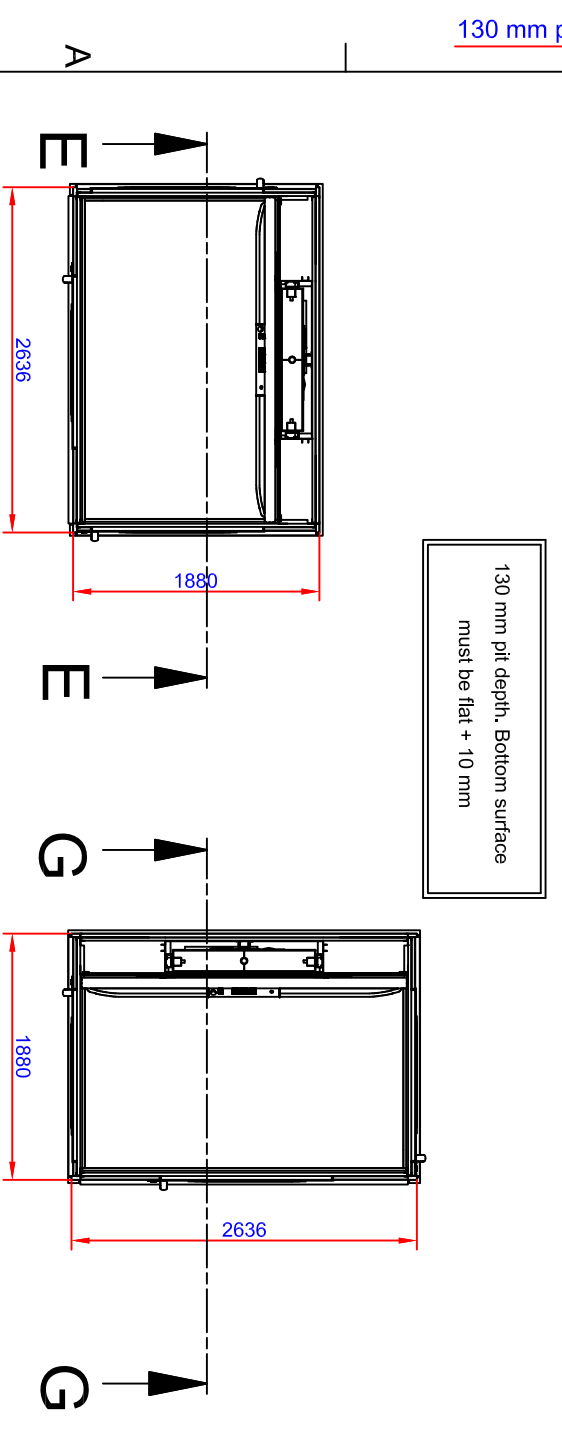
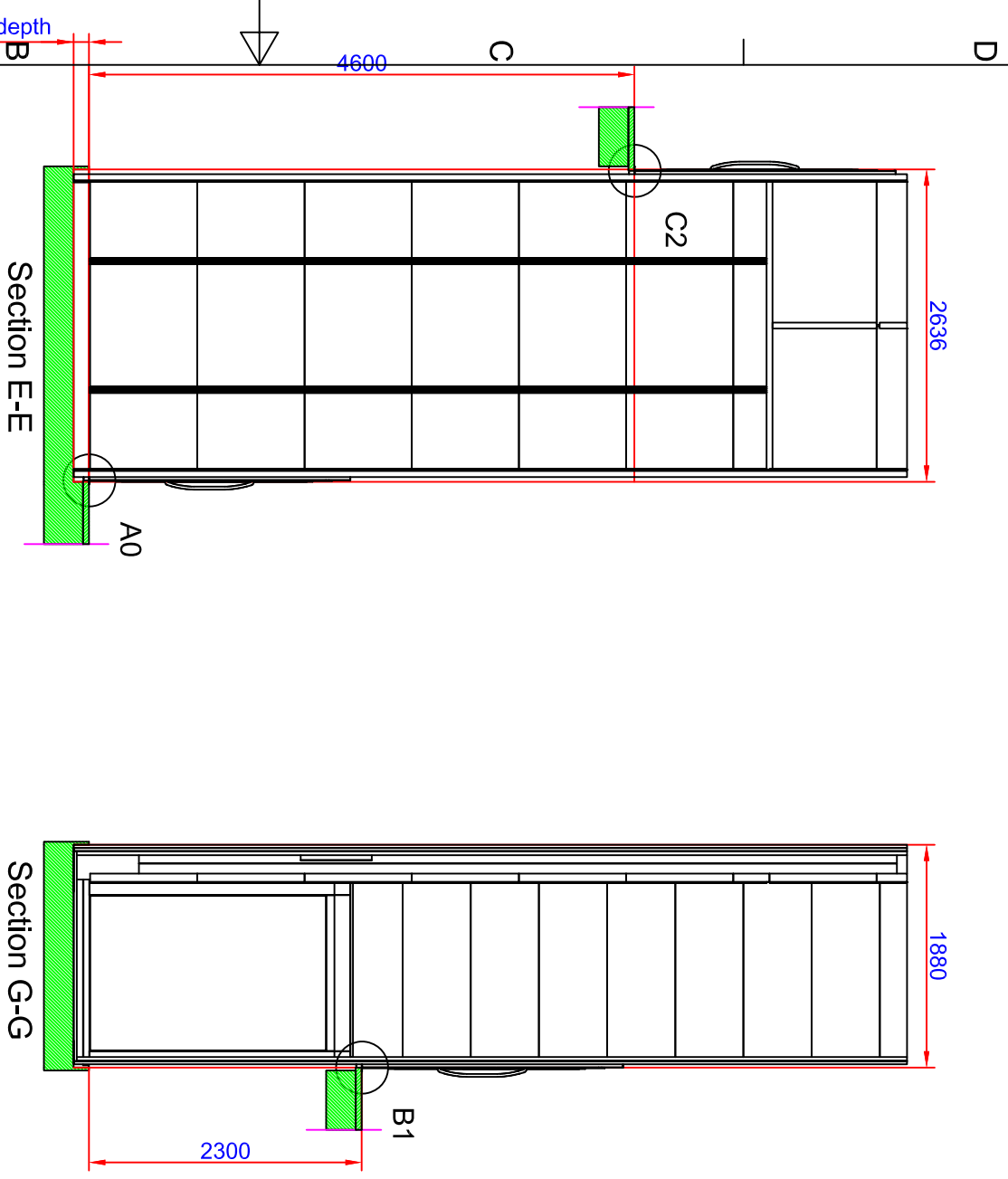
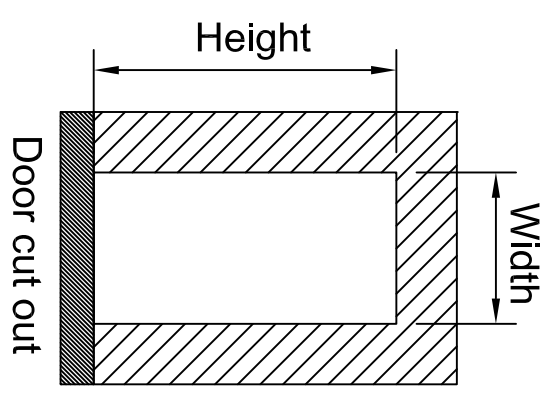
Date
 2018-11-01

sheet
 1 of 7

Scale:
 A3, 1:1

Shaft cutout sizes

Door front cutout sizes		
Landing	Width	Height
A 0	1855	2250
B 1	2580	2250
C 2	1855	2250



130 mm pit depth. Bottom surface must be flat + 10 mm

Approved by builder: _____

European view placement:

Tender no: _____

Order no: _____

Gen. Tolerances: SS-ISO 27681-1 m


Date: 2018-11-01

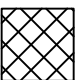
Sheet: 2 of 7

Scale: A3, 1:1

Principal drawing
A8000 - 1405*2480
Cut out sizes

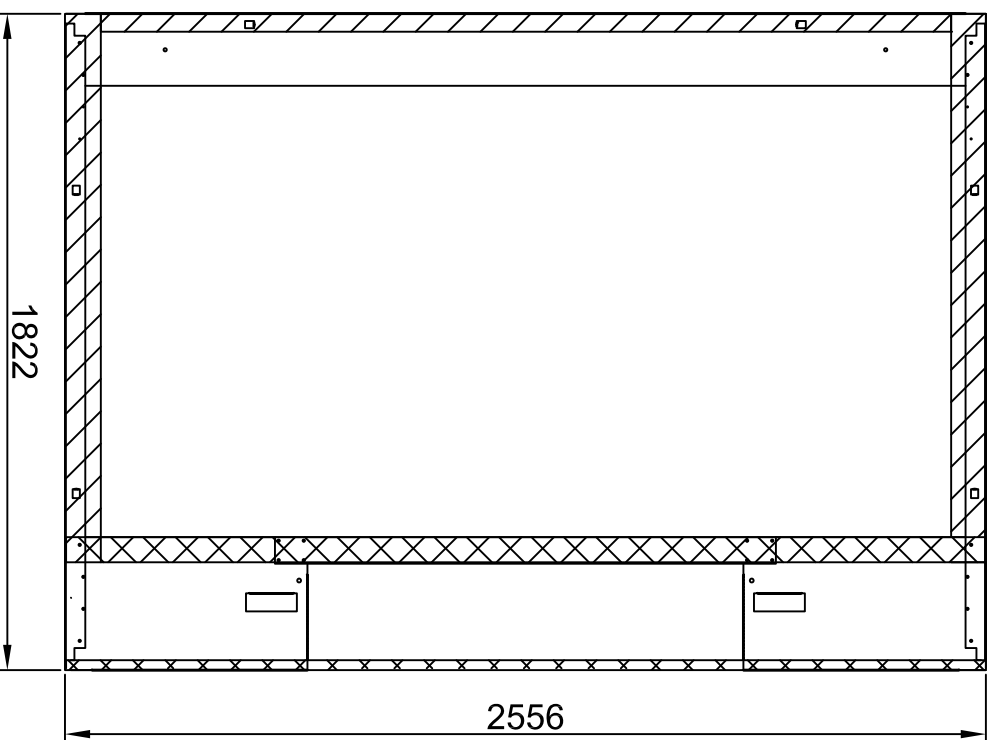
Loads sustained by shaft and platform
and fixing points bottom frame

 L section force: 3,48 kN
L section load: 11,41 kN/m²

 Mast force: 15,85 kN
Mast load: 127,82 kN/m²

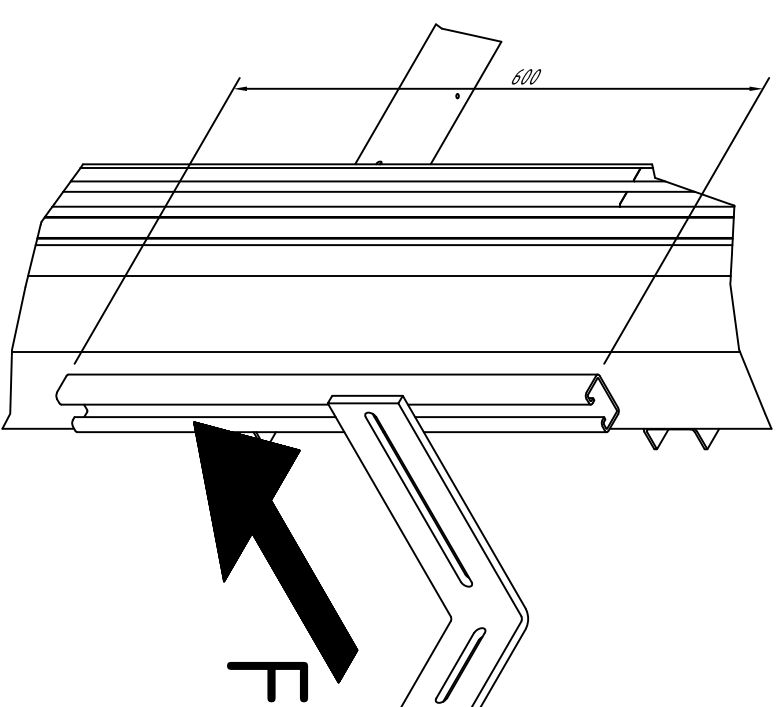
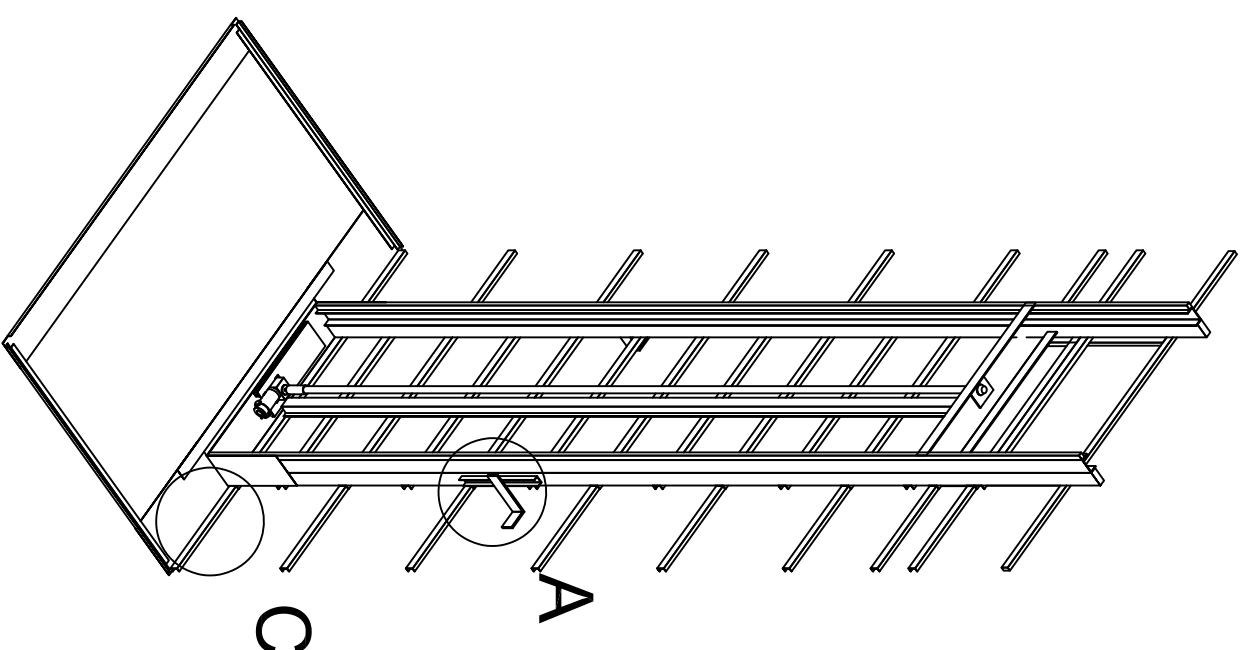
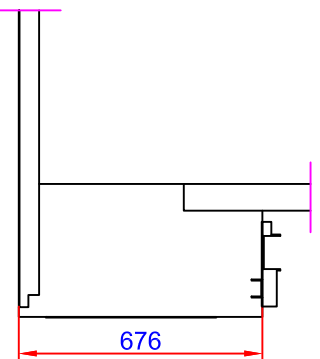
Recommended positioning of fixing points.
Loads per fixing point, F = 4 kN

A (1:5)



Scale: 1:20

C (1:20)



Approved by
builder:

European view placement:



Tender no

A8000 - 1405*2480

Principal drawing

Loads and forces

Order no

Gen. Tolerances

SS-ISO 27681-1 m

Date

2018-11-01

sheet

3 of 7

Scale:

A3, 1:1